



Apprenticeship in Dental Nursing

Blended or Classroom Learning Programmes

Course Overview

The Apprenticeship in Dental Nursing is an 12-18-month government funded course and is comprised of 3 main components:

- Diploma in Dental Nursing Level 3
- Functional Skills English & Maths level 2 qualifications (unless exempt. Typical exemptions include Maths and English GCSEs grade A-C)
- End Point Assessment – consisting of a practice observation and interview

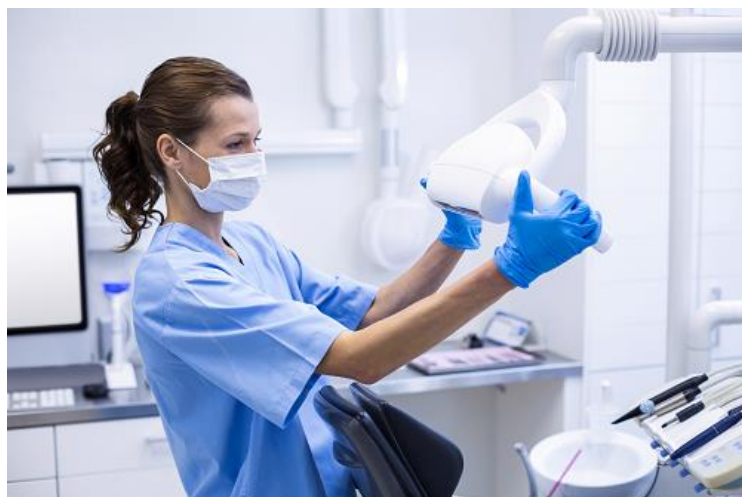
This qualification is accredited by City & Guilds and is delivered in our Training Centre in North London or nationwide through blended interactive E- Learning, enabling learners to access the course from anywhere in the UK.

Candidates must be employed as a dental nurse before starting this course.

For candidates who are not yet employed as dental nurses we run weekly employability classes for London based candidates. For those based elsewhere in the UK they will be able to apply to any of the numerous jobs that we post on the National Apprenticeship Service through our website <https://www.tempdent.co.uk/candidates/apprenticeship-centre/job-feed>

Tempdent uploads new vacancies to the site on a daily basis.

Once successfully placed in a dental practice candidates are then able to enrol onto the course.



Course Structure

Government funded learners must be allocated 20% of their working week by their employer for off the job dental nurse course training including all forms of team inclusive CPD. Off the job training generally includes assessor observations, classroom sessions, webinars, workshops, assessor support.

Classroom	Blended
<p>Teaching: Classroom</p> <ul style="list-style-type: none"> • One day per week, day release • 3 hours (Tutor led) & 3 hours (assessor led) 	<p>Teaching: Webinars</p> <ul style="list-style-type: none"> • 1.5 hour weekly during working day (Tutor led) <p>Interactive E- Learning Content</p> <ul style="list-style-type: none"> • Content/Presentation • Tests/Quizzes • Video
<p>Assessor Contact:</p> <ul style="list-style-type: none"> • Monthly (half a day in practice) 	<p>Assessor Contact:</p> <ul style="list-style-type: none"> • Portfolio Assessor (ongoing daily/ weekly support) • Workplace Assessor (3 full days observations across the programme)
<p>Exams: Invigilated at London training centre</p> <ul style="list-style-type: none"> • 4 Dental Nurse Exams • Maths Functional Skills exam (unless exempt) • English Reading Functional Skills exam (unless exempt) • English Writing Functional Skills exam (unless exempt) 	<p>Exams: Invigilated at regional workshops London, Manchester, Peterborough, Southampton, Somerset & Newcastle</p> <p>3 Workshops on different topics</p> <p>4 Dental Nurse Exams</p> <ul style="list-style-type: none"> • Maths Functional Skills exam (unless exempt) • English Reading Functional Skills exam (unless exempt) • English Writing Functional Skills exam (unless exempt)
<p>End Point Assessment (EPA) (month 13 onwards)</p> <ul style="list-style-type: none"> • 75% practice observation • 25% Interview 	<p>End Point Assessment (EPA) (month 13 onwards)</p> <ul style="list-style-type: none"> • 75% practice observation • 25% Interview

Entry Requirements

No formal previous qualifications are required; however you should have sound knowledge of English and Mathematics.

Applicants with GCSE qualifications in Mathematics and English (grades A-C) will be exempt from the Functional Skills components.

Candidates should be employed as a dental nurse for a minimum of 30 hours per week to complete the apprenticeship in the minimum times. In some circumstances the learner can work shorter hours but the length of the qualification would need to be extended accordingly.

Candidates must have regular access to a computer or laptop with internet connectivity microphone & speakers as they will be required to attend live webinars, access online material and prepare coursework.

Start Dates

Classroom	Blended
<ul style="list-style-type: none">• April• October	<ul style="list-style-type: none">• January• April• July• October

Enrolment Process

Once you have confirmed your interest, we will email you a registration link in order for you to complete your enrolment.

The enrolment process comprises of:

- Completing an online application form
- Submitting evidence of passport and previous qualifications
- Undertaking a basic maths and English assessment

Once you have completed your enrolment process, you will be contacted by one of our administrators to confirm your acceptance on to the next course intake.



If you require any support in completing the enrolment process please do not hesitate to contact us at academysupport@tempdent.co.uk or 020 8371 6700.

Course Fees – payable by employer

Apprentice Age	Non-levy SME (under 50 employees)	Non-levy SME (50 plus employees)	Levy (payroll of £3M plus per year)
16-18	Fully government funded (no fee)	£900 plus VAT	£9,000 when using digital account Or £900 plus VAT when digital accounts funds have run out
19+	£900 plus VAT	£900 plus VAT	£9,000 when using digital account Or £900 plus VAT when digital accounts funds have run out

For candidates ineligible for government funding the fee for the qualification is £3,000 plus VAT. Please note that this is for the diploma in dental nursing, a 12 month privately funded qualification – leading to GDC registration.

Employer government incentives

The following government incentives will be available to employers

Apprentice Age	Non-levy SME (under 50 employees)	Non-levy SME (50 plus employees)	Levy (payroll of £3M plus per year)
16-18	£1000 (£500 paid at week 13 & £500 paid after 1 year on programme.	£1000 (£500 paid at week 13 & £500 paid after 1 year on programme.	£1000 (£500 paid at week 13 & £500 after 1 year on programme.

Employers are not responsible for paying Employers NIC for any apprentices under the age of 25 saving you 13.8% of the annual salary of the apprentice. e.g. for an apprentice on a wage of £12,000 PA you would make a saving of £740 of tax contribution over the duration of the programme.

Benefits

- Provides candidates with a professional qualification and career path.
- Qualified dental nurses can progress onto post-GDC registration courses such as the Oral Health Education, Dental Radiography and Sedation.
- The dental nurse course creates an opportunity to progress into teaching, assessing, dental hygiene, therapy careers and Dental Practice Management

Learning Outcomes

- Demonstrate first aid skills
- Identify and reduce risks to health and safety in the dental setting
- Understand the role and responsibilities of a dental nurse
- Prepare environments, instruments and equipment for dental procedures
- Provide chairside support for the assessment of patients' oral health
- Contribute to the production of dental images
- Provide chairside support for the prevention and control of periodontal disease and caries and the restoration of cavities
- Provide chairside support for the provision of fixed and removable prostheses
- Provide chairside support for non-surgical endodontic treatment
- Provide chairside support for the extraction of teeth and minor oral surgery
- Provide information and support to patients on the protection of their oral health
- Understand the management of oral health diseases and dental procedures

How do I apply?

You can apply for this course by;

- Apply through our website:
<https://www.tempdent.co.uk/training/dental-nurse-training-courses>
- Email us at info@tempdent.co.uk
- Phone our Apprenticeship team on 020 8371 6700





Get in Touch



Facebook/tempdent



Twitter/tempdent



LinkedIn/Tempdent recruitment & training



Head Office
Trojan House
34 Arcadia Ave
Finchley Central
London
N3 2JU

Tel: 020 8371 6700
Email: info@tempdent.co.uk
Web: www.tempdent.co.uk